

Refurbishment? Redevelopment?

For all the Steel - Call Cannon Steels

Cannon Steels are an established Steel Stockholding and Steel Fabrication Company and can offer the complete Steel Supply service to the Building and Construction trades, local builders and the D.I.Y. Trade. We operate from our large stockyard and fabrication works in Enfield, North London. Close to the M25 we offer speedy deliveries throughout London and the surrounding areas on our own fleet of lorries.

For competitive prices, prompt deliveries and the complete service to the Construction and Building industries - plus our Trade Counter for urgent Collections, Local builders and D.I.Y. call us now with all your steel requirements.

- STEEL FROM STOCK
- CUT TO LENGTH
- FABRICATION TO DRAWINGS
- WELDING - DRILLING
- RSJ'S U-BEAMS, COLUMNS, PLATES
- CHANNELS, ANGLES, TUBES, BARS
- DESIGN - SITE SURVEY
- ERECTION ON SITE
- REINFORCING STEEL

Cannon Steels Ltd

*London Works:
Tel: 020-8805 4070/020-8805 6987
www.cannonsteelsltd.co.uk
email@cannonsteelsltd.co.uk*

CANNON STEELS

The Complete Steel Service for over 50 years'



7 Walcot Road, Brimsdown, Enfield
Middlesex. EN3 7NF

Telephone:

020-8805 4070

020-8805 6987

www.cannonsteelsltd.co.uk

email@cannonsteelsltd.co.uk



**Visit Our
Website For
Full Details**

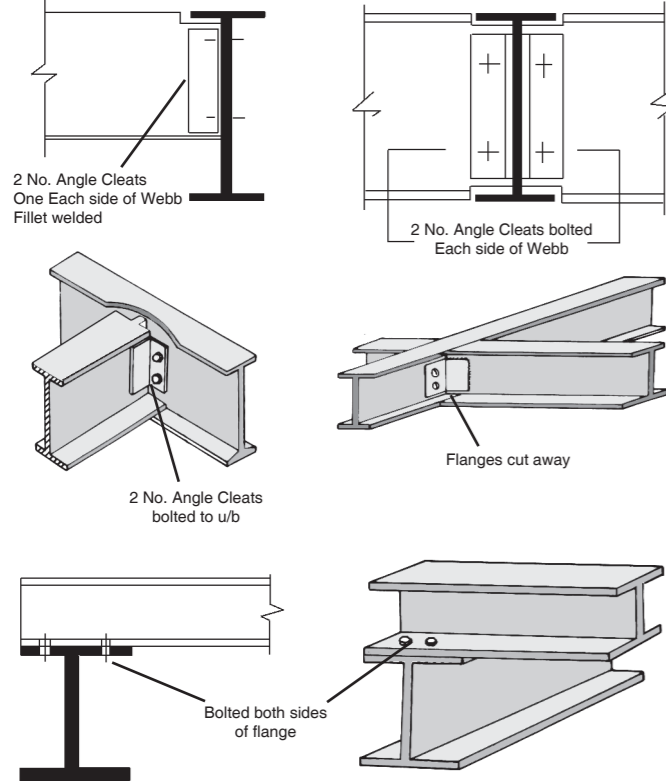
CUT TO SIZE OR FULLY FABRICATED

CANNON STEELS

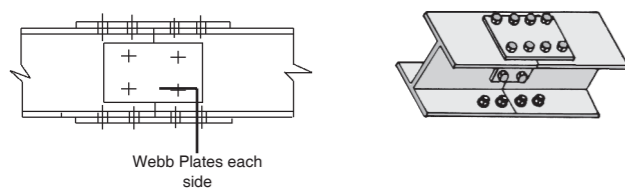
CUT & BENT BAR 24 HOUR EXPRESS SERVICE

Typical Fabrication Details

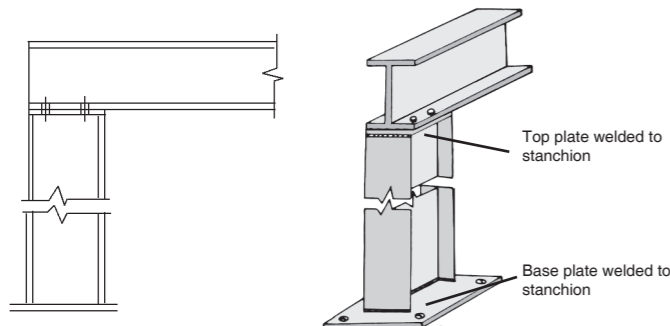
A. Beam to Beam Connections



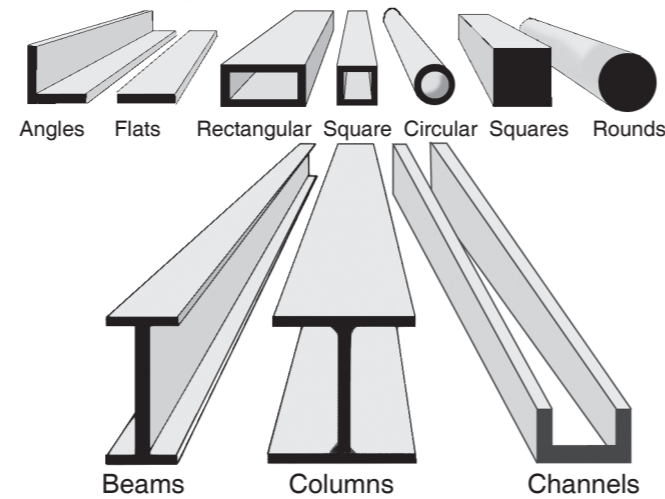
B. Splice Connections



C. Beam to Stanchion Connections



All Steels Supplied



Reinforcing Mesh BS 4483 : 2005

Standard sheet size 4.8 x 2.4 Meters. Area 11.52 M²

BS REF.	Mesh sizes nominal pitch of wires	wire sizes main cross mm	main cross mm	Cross Sect. area per meter width mm ²	Nominal Weight per sheet M ²	Weight per sheet kg	Sheets weight tonne
---------	-----------------------------------	--------------------------	---------------	--	---	---------------------	---------------------

SQUARE MESH FABRIC

A393	200	200	10	10	393	393	6.16	14.1	70.96
A252	200	200	8	8	252	252	3.95	22.0	45.50
A193	200	200	7	7	193	193	3.02	28.7	34.79
A142	200	200	6	6	142	142	2.22	39.1	25.57

STRUCTURAL MESH FABRIC

B1131	100	200	12	8	1131	252	10.90	8.0	125.57
B785	100	200	10	8	785	252	8.14	10.7	93.57
B503	100	200	8	8	503	252	5.93	14.6	68.31
B385	100	200	7	7	385	193	4.53	19.2	52.19
B283	100	200	6	7	283	193	3.73	23.3	42.97
B196	100	200	5	7	196	193	3.05	28.5	35.14

LONG MESH FABRIC

C785	100	400	10	6	785	71	6.72	12.9	77.41
C636	100	400	9	6	636	71	5.55	15.6	63.94
C503	100	400	8	6	503	71	4.51	19.2	51.96
C385	100	400	7	6	385	71	3.58	24.2	41.24
C283	100	400	6	6	283	71	2.78	31.2	32.03

WRAPPING FABRIC

D49	100	100	2.5	2.5	49	49	0.77	112.7	8.87
-----	-----	-----	-----	-----	----	----	------	-------	------

Bar Bending Shapes • BS 8666 : 2005

SHAPE CODE 00	SHAPE CODE 01	SHAPE CODE 11	SHAPE CODE 12
LENGTH = A	LENGTH = A Stock Lengths (6m + 12m)	LENGTH = A + (B) - 0.5r - d	LENGTH = A+(B)-0.43R - 1.2d
SHAPE CODE 13	SHAPE CODE 14	SHAPE CODE 15	SHAPE CODE 21
LENGTH = A + 0.57B + (C) - 1.6d	LENGTH = A + (C) - 4d	LENGTH = A + C	LENGTH = A + B + (C) - r - 2d
SHAPE CODE 22	SHAPE CODE 23	SHAPE CODE 24	SHAPE CODE 25
LENGTH = A + B + C + (D) - 1.5r - 3d	LENGTH = A + B + (C) - r - 2d	LENGTH = A + B + (C)	LENGTH = A + B + (E)
SHAPE CODE 26	SHAPE CODE 27	SHAPE CODE 28	SHAPE CODE 29
LENGTH = A + B + (C)	LENGTH = A + B + (C) - 0.5r - d	LENGTH = A + B + (C) - 0.5r - d	LENGTH = A + B + (C) - r - 2d
SHAPE CODE 31	SHAPE CODE 32	SHAPE CODE 33	SHAPE CODE 34
LENGTH = A + B + C + (D) - 1.5r - 3d	LENGTH = A + B + C + (D) - 1.5r - 3d	LENGTH = 2A + 1.7B + 2C - 4d	LENGTH = A + B + C + (E) - 0.5r - d
SHAPE CODE 35	SHAPE CODE 36	SHAPE CODE 41	SHAPE CODE 44
LENGTH = A + B + C + (E) - 0.5r - d	LENGTH = A + B + C + (D) - r - 2d	LENGTH = A + B + C + D + (E) - 2r - 4d	LENGTH = A + B + C + D + (E) - 2r - 4d
SHAPE CODE 46	SHAPE CODE 47	SHAPE CODE 51	SHAPE CODE 56
LENGTH = A + 2B + C + (E)	LENGTH = 2A + B + 2C - 1.5r + 3d	LENGTH = 2(A + B + (C)) - 2.5r - 5d	LENGTH = A + B + C + (D) + 2(E) - 2.5r - 5d
SHAPE CODE 63	SHAPE CODE 64	SHAPE CODE 67	SHAPE CODE 75
LENGTH = 2A + 3B + 2(C) - 3r - 6d	LENGTH = A + B + C + 2D + E + (F) - 3r - 6d	LENGTH = A	LENGTH = π(A - d) + B
SHAPE CODE 77	SHAPE CODE 98	SHAPE CODE 99	
LENGTH = C π (A - d) C = No. of turns	LENGTH = A + 2B + C + (D) - 2r - 4d	All other shapes where standard shapes cannot be used	

Bar Dimensions / Weights

Bar Dimensions/Weights nominal size	Cross Sectional mm	Mass Per Meter Run (MM ²)	Meter Per Tonne (kg)
6*	28.3	0.222	4504
8	50.3	0.395	2531
10	78.5	0.616	1623
12	113.1	0.888	1126
16	201.1	1.579	633
20	314.2	2.466	405
25	490.9	3.854	259
32	804.2	6.313	158
40	1256.6	9.864	101

- COMPLETE FABRICATION SERVICE & SITE ERECTION
- RANGE OF ACCESSORIES
- STUDDING, BOLTS & FIXINGS

HEAD OFFICE AND MAIN WORKS
7 WALCOT ROAD • MILLMARSH LANE • BRIMSDOWN • ENFIELD • MIDDLESEX EN3 7NF
Tel: 020-8805 6987/4070

