

CANNON STEELS LTD

“The name in steel for over 50 years”

Construction Accessories

Product Catalogue

Reinforcement & Formwork

Wire Spacers

ALTISPACER



ALTISPACER is a welded snake wire spacer for supporting reinforcement of fabric, which is stronger than normal hychair and circular spacers, making it extremely reliable and safe on site. ALTISPACER requires no tying so is extremely quick to set up on site.

- Easy to handle
- No tying on site required
- Designed for strength
- Stronger than normal methods
- More economical

Height

50, 60, 70, 80, 90, 100, 110, 120, 130, 140, 150, 160, 170, 180, 190, 200mm

Hychairs A Type Spacer

A welded girder for supporting reinforcement or fabric without damaging the polythene membrane. Hychairs are also ideal for dowel bar support.



Length

2m

Heights Available

50mm to 400mm

Circular Wire Spacers

Formed into a 1m diameter circle. 4/5 hoops per standard full size sheet of mesh are normally sufficient.

Pack Size: 20m, 100m

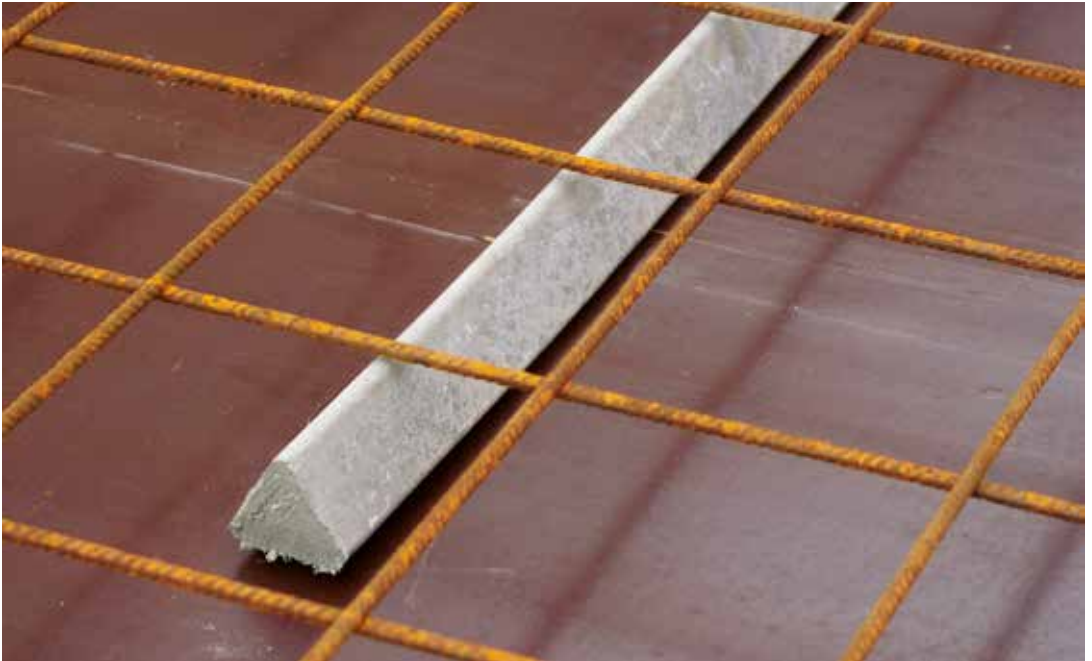


Height

50, 60, 75, 90, 105, 120, 135, 150, 165, 180, 200mm

Concrete Spacers

ALTIBAR



Triangular bars manufactured to high quality, with a new shape.

- Ensured cover, independent of direction of placing
- Fibre concrete, therefore perfect bond to in-situ concrete - dimensional accuracy

ALTIBAR triangular bars are standard 40N, however 50N or 60N can be produced on request.

Sizes	Length
40, 50, 75mm	1m

Square Bar

A heavy duty bar for supporting steel on bridge decking and other areas where high point loads can be expected.



Sizes	Length
25mm to 100mm	1m

Flat Based (Double Cover)

Flat Based Double Cover Concrete Spacers. Suitable for heavy duty horizontal applications.



Denominations	Pack Size
40/50	200
60/70, 65/70	50

Reinforcement & Formwork

Arched Based (Double Cover)

For minimum contact with formwork. Ideal for vertical reinforcement.



Denominations	Pack Size
30/40	250
40/50	200
50/60	125
65/70	50

Arched Based (Triple Cover)

For minimum contact with formwork. Ideal for vertical reinforcement.



Denominations	Pack Size
20/25/30	500
35/40/50	200

All bars 40N as standard, 50N and 60N Available upon request

Plastic Spacers

Wheel Spacers – Standard Duty

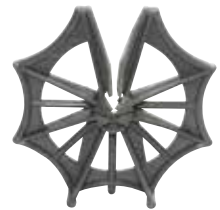
A comprehensive range of clip-on plastic wheel spacers suitable for all pre-cast and site applications.



Sizes Available	Bar Diameter
20mm to 75mm	4 – 12/12 – 20

Plastic Wheel Spacer – Heavy Duty

Heavy duty plastic ring spacer with stiffening legs which add stability to the product. Ideal for bottom reinforcement in both on-site and precast applications. Design of the bottom feet ensures minimal contact with the formwork.



Various sizes available

ALTITRAC



Plastic Spacers, more commonly known as TricTrac, is traditionally used for supporting bottom reinforcement in suspended slabs. ALTITRAC is a versatile spacer with high load-bearing capacity. It is a light, easy and continuous stable support for mesh and reinforcement. Due to its unique design it does not easily overturn or break when stood on and allows excellent free flow of concrete.

Key Benefits

- Due to its unique shape, ability to store more product on a pallet, reducing number of pallets required on site
- More robust than standard tric trac shape to withstand site conditions and handling
- More economical
- Ensures minimal contact with the concrete surface
- Allows free flow of concrete

Height	Length	Pack Size
15mm	2000mm	100
20mm	2000mm	100
25mm	2000mm	100
30mm	2000mm	100
35mm	2000mm	80
40mm	2000mm	80
45mm	2000mm	80
50mm	2000mm	80
55mm	2000mm	82
60mm	2000mm	82
65mm	2000mm	82

Tric Trac Spacer

A versatile plastic spacer that can be used on both horizontal and vertical surfaces.



Length	Sizes Available
2m	25mm to 70mm

Grade Plate Spacers – Support Fix

Double cover spacer that has been designed for use in ground floor slabs, where its large base area prevents puncturing of polyethylene membrane. Often used with ground beam shuttering.

Various sizes available



Reinforcement & Formwork

Support Clip – Light Duty

General purpose clip on spacer used in all types of applications found in precast yards and on site. It can be fixed horizontally or vertically on bars from 4mm to 12mm diameter.

Various sizes available



Support Clip – Heavy Duty

Heavy Duty Support clip for both vertical and horizontal application. Suitable for bar size from 8mm to 25mm.

Various sizes available



Plastic Tower Spacers

Robust and designed for vertical and horizontal applications. Excellent stability and concrete flow with large clamping area and pointed feet to ensure minimum visibility on the struck concrete face.

Various sizes available



Plastic Shims



Hard plastic shims for non-structural, temporary alignment of precast concrete panels and components. Size 70 x 70mm.

Thickness Available

2mm to 10mm

Bar End Cap Spacers

Provide cover to the formwork and prevent staining to the precast units.

Various sizes available



Plastic Pile Cage Spacers

Specially designed spacers for use in pile cages. Wheel spacers can be threaded onto helicals before cage is inserted. Clip on spacers can be fitted onto helicals or main bars.

Various sizes available



Tying Wire

ALTIWIRE



ALTIWIRE is a black annealed wire used for manual tying of pieces or iron reinforcement in construction.

- Lighter to handle
- 10kg Roll

Tying Wire

Stainless Steel Coil.

Gauge: 1.2mm



Double Loop Wire Ties

Different gauges can be supplied if required. Tie puller tool provided.



Rapid System – Tying Wire and Dispensing System

Tying wire dispensing reel system used by Steel Fixers when tying reinforcement in concrete structures. The system comprises of a dispensing reel which houses a 2kg spool of tying wire.



System Components:

- 2kg (224m 18 gauge) grade 304 stainless steel refill spool
- 2kg (120m 16 gauge) black annealed refill spool
- Refillable Tying Wire Dispensing Reel
- Reelfix Branded Heavy Duty Leather Belt

Material	Diameter	Metres per 2kg	kg per 1000m	Approx. gauge
Stainless 304/316	1.2mm	224	8.93	18
Black Annealed	1.6mm	120	16.66	16

Lengths Available

100mm to 250mm

Reinforcement & Formwork

Dowel Bars and Accessories

Stainless Steel Dowel Bars



Supplied sawn cut to order to your specific lengths. Grades available are 304 & 316.

Available Diameters

8mm to 40mm

Dowel Bar Sleeves



A flexible PVC sleeve to DOT specification. Compressible foam plugs available for use in expansion joints.

Available Diameters

12mm to 32mm

Available Lengths

200mm to 450mm

Epoxy/Polymeric Coated Dowels



Dowel bars can be supplied with either a partial or full coating to your specific requirements.

All coatings comply with DOT specification.

Mild Steel Dowel Bars

Plain round bars supplied with either cropped or sawn ends.



Available Diameters

12mm to 25mm

Available Lengths

400mm to 900mm

Individual Plate Dowels

Range of individual rectangular plate dowels, housed in innovative, high strength plastic sleeves.

These dowels can be used where aris protection is not required or as part of a site-assembled system with the patented MultiJoint top profile if a steel joint edge is required.



De-bonding Compound

A bitumen based material for painting on to dowel bars and de-bonding contraction joints in slab construction.



Available Sizes

5 and 25 litre

Expansion Dowel Caps

A rigid tube 100mm length with 25mm of compressible filler, designed as a tight fit over dowel bars in expansion joint. If combining both sleeves and caps, use next size up for the cap.

Length: 100mm



Available Diameters

12mm to 32mm

Pack Size

100

Dowel Bar Cradles

Dowel Bar Cradles are used to support dowel bars in contraction and expansion joints.

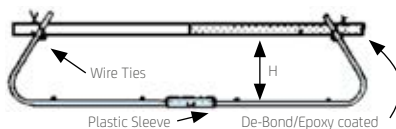
Contraction Joints

Wire Ties.
De-Bond/Epoxy coated.
Plastic Sleeve.

Expansion Joints

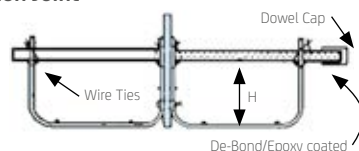
Dowel Cap.
Wire Ties.
De-Bond/Epoxy coated
Plastic Sleeve.

Contraction Joint



h = height from base to underside of dowel bar.

Expansion Joint



h = height from base to underside of dowel bar.

Bolt Boxes and Accessories

Holding Down Bolts

A full range of holding down bolts are available.

Available in Galvanised and Stainless Steel and can be made to bespoke sizes at request.

Standard Lengths: 20, 24mm

Standard Diameters: 375, 450, 600mm



Cardboard Bolt Boxes

A waxed cardboard cone which can be cut away when no longer required.

Various lengths available



The Bolt Cracker

Designed to maximize holding down bolt movement while ensuring there is no induced stress or failure and no damage to the bolt head or threading. It provides a simple, easy to install, safe and cost effective solution and also eliminates manual handling risks, noise, vibration and chemical contact. The Bolt Cracker clips on to the head of the bolt and tightens up.



Polystyrene Bolt Boxes

An economical and easy method of ensuring bolt location in structural steel stanchions. Polystyrene cones can easily be dissolved when their application is complete.

Various sizes available



Expanded Metal Bolt Boxes

Available Diameters:
75mm, 100mm

Available Lengths:
150mm to 500mm



Adomast Resoklens

Cleaning Solvent for Resin based products. Resoklens is a specially formulated solvent for cleaning resin products from tools and equipment before the resin has hardened, and for removing any residual release agent from formwork.

Available Sizes: 5, 20, 25, 205 litres and IBC's



Reinforcement & Formwork

Beamform

ALTIFORM



ALTIFORM is a compact beamform sheet which maintains the strength of traditional formwork and other proprietary systems but without the bulk. The reduced size means that cutting and wastage on site is minimal. Manufactured from heavy-duty polypropylene, ALTIFORM is an economical method of constructing in-situ concrete ground beams and pile caps.

- Offers protection against ground movement
- Reduced size means less cutting and waste on site
- Lighter and easier to handle
- More economical

Size

2 x 4m length

Beamform

Beamform is a fast and simple system for constructing in-situ concrete ground beams and pile caps. Durable polypropylene sheets.

Various sizes available
Bespoke sizes available



Tie Bar System

15mm Thru-Tie Bar

A quick release 15mm tie system. The bar is supplied in 6m lengths.

Bespoke sizes available



Wing Nuts & Water Plates

A knock-on wing nut used in conjunction with water plates for securing the bar in formwork applications. Can also be supplied for 20mm and 26mm tie bars.



Connection Nuts

Joint nuts are used to join the rods complete with centre stop to ensure equal spacing inside the connector. The shorter hexnut is available for use where access is restricted.



Thru Sleeve



Thru sleeve is a rigid PVC tube of 2mm wall thickness, supplied in 2 metre lengths which can easily be cut to the required size. It is used as an expendable sleeve over tie bolts, facilitating their removal and also acting as a spacer to ensure correct width of wall.

Inside Diameter	Outside Diameter	Bag Qty
20mm	24mm	100
22mm	26mm	100
26mm	30mm	50
32mm	38mm	50

Thru Cones

Thru cones are used at the ends of the thru sleeve and can be easily extracted after removal of the formwork, to form a chamfered recess for subsequent grouting.

Available Diameters:
20mm to 32mm



Cast-In Anchor

A stainless steel anchor for casting into concrete, complete with nailing plate for fixing to formwork.



Rock Anchor

For securing single-sided shuttering to rock or concrete walls. Drill hole of 36.5 to 38mm diameter to the following depths:

- Min 20cm in concrete
- Min 2.0m in rock more than 200kg/cm²
- Min 2.5m in rock more than 150kg/cm²
- Min 3.0m in rock more than 100kg/cm²

Conduct tensile tests before applying final load.



Plastic Stoppers

Used with plastic sleeve/tube to form a watertight seal. For tube internal diameters 20-32mm.

Available Diameters:
20mm to 32mm



Adoplug

Wall Tie Filler and Sealing Compound. Adoplug is a polymer modified, fibre reinforced, cementitious powder designed specifically for plugging tie holes. When mixed with water it forms a cohesive, easy to apply, shrinkage compensated compound and cures to develop a strongly bonded watertight plug to form an effective seal.

Available Sizes: 8, 25 kg

Coverage: 2 kg will fill approximately 1m² by 1mm deep



Tiefill

For the filling of tie-holes formed by formwork bolts. The addition of clean water gives a rapid setting, yet durable high strength mortar and is ideally suited for the filling of voids particularly in new construction which need to be rapidly put into service, such as tie-holes, grout-holes and voids around fixings.

Reinforcement & Formwork

Column Formers

Circular Concrete Column Formers

Light-weight, easy to set and strip, even in the wet. Convenient, cost effective and versatile, it can be cut, drilled or scored and is available in a variety of types and sizes to meet different forming needs.



Various sizes available
Bespoke sizes available

Seamless Circular Concrete Column Formers

This tube has a resin-coated liner, which is completely seam free and provides the ultimate in concrete surface finish and appearance.



Square or Rectangular Concrete Column Formers

Square or rectangular concrete column formers minimise labour costs and the hassles associated with site-built, plastic and metal forms.



Fixing Collars

Fixing collars have become the proven method for supporting circular column formers in position whilst casting and are reusable. Should only be supported in normal use at the base and top (they should not be supported in the middle).

Metal Formwork

Permanent Formwork

Hy-rib expanded metal sheet product, specifically developed for use as permanent formwork to concrete, primarily used in construction joint applications but it is also used to form wall, beam & column surfaces and slabs soffits, where the formed surface will not be seen.



Zinc Coated Hy-Rib - Type: (BS EN 10327) DX51D + Z275

Grade	Length	Width	Thickness	Weight	Sheet Identification
2811	2, 3, 4, 5m	89, 178, 267, 356, 445mm	0.4mm	3.39kg/m ²	ID Colour: Red 2811
2611	2, 3, 4, 5m	89, 178, 267, 356, 445mm	0.5mm	4.23kg/m ²	ID Colour: Green 2611
2411	2, 3, 4, 5m	89, 178, 267, 356, 445mm	0.75mm	6.34kg/m ²	ID Colour: Yellow 2411

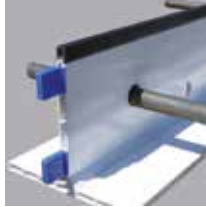
Stainless Steel Hy-Rib - Type: (BS EN 10088-1) 1.4301

Grade	Length	Width	Thickness	Weight	Sheet Identification
2811 S 304	2, 4, 5m	89, 178, 267, 356, 445mm	0.4mm	3.4kg/m ²	ID Colour: Blue 2811 S 304

Screed Rails and Accessories

K-FORM Screed Rails

Made from recycled materials, lightweight, durable and does not require removal after placement of concrete. It is easily cut to length on site and has pre-drilled holes in the vertical face for placing steel dowel bars and in the base for anchoring. Includes built in expansion joint, endclips for joining and a removable top string for joint sealing.



Top Strip Angle Joints

Top Strip Angle Joints integrate seamlessly with K-FORM K85 and K135 Screed Rails.

Size	Slab Thickness
K35	50 – 100mm
K85	100 – 140mm
K135	150 – 225mm

Metal Top Screed Rail

The unique design with its 1.5mm top profile of galvanised steel provides a very straight and fully controlled hairline crack. The profile of this rail along with the holes in the metal strip tie the rail firmly to the slab.



Available Heights	Available Length
65, 90, 115, 140, 165mm	3.9m

Plastic Screed Chairs

An easily adjustable system for use with a 50mm diameter pole.

Minimum slab depth 100m



Steel Screed Chairs

A heavy duty steel screed chair system that is designed for slabs up to 405mm deep, comprising a rigid three legged base with threaded shaft into which a saddle is screwed to adjust the height.

Available for various slab depths from 115mm to 405mm

Sizes 115mm - 405mm available



Screed Bars

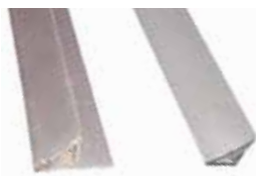
Used when screeding to provide greater accuracy in concreting levels.

Reinforcement & Formwork

Crack Inducers and Void Formers

Corner Fillets

A range of rigid PVC strips of 2.5m length for nailing to column shutters or formwork. Supplied as either plain or with a nailing flange. Supplied in 100m bundles.



Available Sizes: 10 x 10mm to 30 x 30mm

Aluminium T-Bar

A re-useable rigid aluminium T-bar to form a straight void to accept top crack inducers.



Supplied in 5m lengths

Top Crack Inducer Two Part

A two part top crack inducer and joint former. The top section should be removed after concrete has cured, leaving a sealant void of 25mm x 10mm.

We recommend the use of the aluminium T-bar when using this product.

Supplied in 5m lengths



PVC Void Former



A re-useable PVC void former for forming grooves in concrete or nailing to formwork.

Length	Width	Height
3m	10m	20m
3m	20m	20m
3m	12m	20m
3m	25m	20m

Base Crack Inducer



A base crack inducer used to induce a crack from the base vertically. Used in conjunction with top crack inducers or saw cutting.

Length	Depth
5m	40 and 75mm

Side Slab Seal

A 40mm deep by 5mm wide expanded polyethylene foam joint filler.

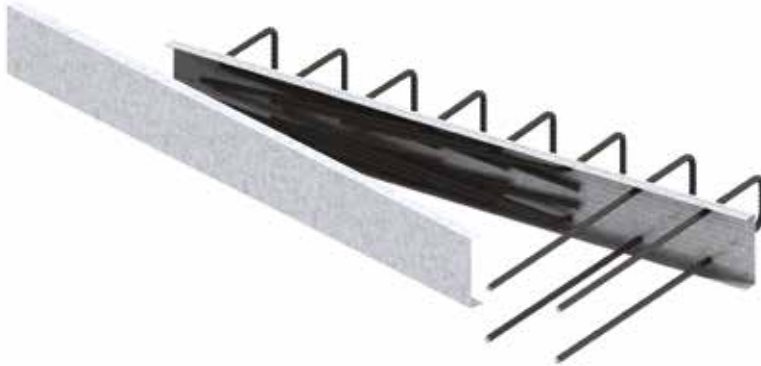
1 and 5 litre contact adhesives available

Available in 30m standard and self-adhesive Coils



Continuity Systems

Eazistrip Continuity System



Eazistrip Reinforcement Continuity Systems are designed to maintain continuity of reinforcement at construction joints in concrete. Formwork design is simplified and there is no need to drill shuttering. Each unit consists of a galvanised steel casing which is dimpled to provide an effective concrete bond. Pre-bent bars are housed within the box and are secured by a protective cover. When the cover is removed the bars can be straightened ready for lapping onto the main reinforcement. Bars must be straightened only once, using an Eazistrip re-bending tool. When the potential for water ingress through the construction joint is a major concern, Eazistrip can be supplied with a Pentaflex hydrostatic seal which provides protection against moisture permeation along the joint face.

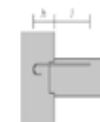
Eazistrip Reinforcement Continuity systems are manufactured from CARES approved bar. The grade of reinforcing bar complies with the tensile requirements of BS4449:2005 Grade B500C. The bars are bent in accordance with BS8666.

Notes

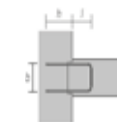
1. Dimensions shown are nominal. Heights and lengths may typically vary by one bar diameter.
2. On 16mm diameter Type U boxes, the stirrup may be achieved by using two shape code 21 bars. These are referenced DH.
3. Boxes containing 16mm bars are nominally 50mm deep.
4. Maximum box length is 3m dependent upon weight.

Bespoke sizes available

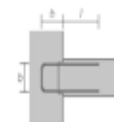
Standard Range Specifications



Type H
Hook (Standard in
80mm box)



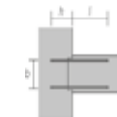
Type RU
U Bar (Not available
in 80mm box)



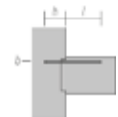
Type U U
Bar/DH Double Hook
(Not available in
80mm box)



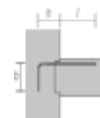
Type S
Straight Bar



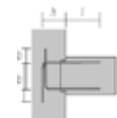
Type S2
Double Straight Bar



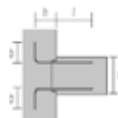
Type SH
Angle with leg in
horizontal plane



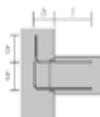
Type RA
Angle



Type RA1
Double Angle



Type RA2
Double Angle



Type RA3
Double Angle



Type CS
Closed Stirrup



Type 2H
Two Single Hooks
used for boxes wider
than 240mm

Reinforcement & Formwork

Ancon KSN Anchor Continuity System

Ancon KSN Anchors, in combination with Bartec parallel-threaded reinforcing bars, simplify concrete construction joints. They provide continuity of reinforcement at slab-to-wall joints without the restrictions on bar length and bar diameter of re-bend continuity systems.



Hyten Continuity Rack

Alternative to traditional continuity/pull out bar systems and can be used in situations where a traditional/pull out bar casing would be too heavy, large or expensive to be practical.



KSN Tapered Thread Timber Anchor Carrier



KSN Anchors are supplied fixed to a timber carrier at the designed spacing. The timber simplifies installation, creates a shear key when removed and increases anchor embedment.

Bartec Continuation Bars

Ancon KSN Anchors are designed for use with 12, 16 and 20mm diameter reinforcing bar, threaded with an Ancon Bartec thread.



KSN Anchors

There are eight standard anchors in the range.



Reinforcing Bar Couplers

MBT ET Series



The MBT range of couplers provides a cost-effective method of joining reinforcing bars. ET series couplers are used to connect reinforcing bars of the same size. They can be used when neither bar can be rotated and are available in sizes 10mm to 40mm.

Various sizes available

MBT Transition Series



MBT Transition couplers connect reinforcing bars of different diameters and are suitable for applications when neither bar can be rotated. They are available to suit bar sizes 12mm to 40mm.

Various sizes available

MBT Continuity Series



The MBT Continuity coupler allows reinforcement to be extended at construction joints in concrete without the need to drill or otherwise damage the formwork at the construction joint locations. They are available to suit bar sizes 12mm to 40mm.

Various sizes available

MBT Headed Anchors



MBT Headed Anchors are designed to provide dead end embedment for bars in concrete. This helps to reduce congestion and simplify the placement of rebars by removing the need for hooked ends. The anchor comprises half an MBT coupler with a plate welded to one end which carries the full tension load of the bar when it is bearing against the concrete. The MBT Headed Anchor also has the added advantage of requiring no special bar end preparation.

Various sizes available

Reinforcement & Formwork

Starter Bar Systems

Starter Bar



The Ancon Tapered Thread Starter Bar System provides continuity of reinforcement at construction joints. The female component comprises a bar, normally threaded at one end only, supplied fixed to an Ancon tapered thread coupler. Various bar shapes are available.

Various sizes available

Continuation Bar



The male section comprises a straight bar, threaded at one end to allow connection to an Ancon tapered thread coupler.

Various sizes available

HT Couplers



HT Range consists of standard, positional, mechanical and connecting couplers.

Various sizes available

Nailing plates and torque wrenches are also available.

Shear Load Connectors

DSD



The DSD is the original two-part, double dowel, shear load connector. The dowel component can move longitudinally within the sleeve to accommodate movement.

Various sizes available

ESDQ



The ESDQ shear load connector uses the same dowel as the ESD, but the cylindrical sleeve is contained within a rectangular box section to allow lateral movement in addition to longitudinal movement.

Various sizes available

DSDQ



The DSDQ shear load connector uses the same dowel component as the DSD, but the cylindrical sleeve is contained within a rectangular box section to allow lateral movement in addition to the longitudinal movement.

Various sizes available

ESD



This single dowel shear connector is available in four sizes with each size available in two lengths. ESD shear connectors are used where the slab or wall is too thin for DSD, and where loads are small.

Various sizes available

Lockable Dowel Systems

Ancon ESDQ-L20



The original lockable dowel for slab-to-slab joints. It allows for initial movement to take place and then, after a predetermined period (generally 60-120 days) is locked with a two part epoxy resin poured into the L-shaped grout box.

Ancon ESDQ-L20W



A lockable dowel for slab-to-wall joints. The dowel compartment is manufactured from 30mm diameter Duplex stainless steel. One end of the dowel is designed to fix into the stainless steel Ancon SKS24 Threaded Anchor cast into the face of the concrete, and the other end features a series of grooves to accept the locking plate.

Ancon HLDQ-L30



A heavy duty lockable dowel for slab-to-slab joints. It has a design capacity of up to 136kN.

Reinforcement & Formwork

Balcony Connectors

Ancon Isotec

A high performance thermal break system for concrete-to-concrete applications. It comprises 100% stainless steel reinforcement which offers maximum corrosion resistance and low thermal conductivity. Each unit is manufactured as a non-deformable cage offering high rigidity and dimensional stability.



Concrete-to-Concrete

Ancon Isolan

A simple, cost-effective thermal break system. Conventional reinforcing bars are used to provide the tension and compression reinforcement which offer cost savings over other systems and simplifies specification, scheduling, transportation, handling and installation.



Concrete-to-Concrete

MV System

The Ancon Isolan MV system is used for the transfer of moment and shear forces in cantilevered balconies.



Concrete-to-Concrete

Ancon STC Connectors

Used to anchor steel balconies into structural concrete slabs. They feature an integral thermoset plate at the interface between the bracket and slab to minimise cold bridging. Two-part construction allows phased installation to suit site schedule.



Steel-to-Concrete

V System

The Ancon Isolan V system is used for the transfer of shear forces in simply supported balconies.



Concrete-to-Concrete

Ancon STS Connectors

Used to fix steel balconies to structural steel frames. Two thermoset plates provide a thermal break at each steel interface to minimise cold bridging. Vertical fixing centres vary to accommodate steel section heights.



Steel-to-Steel

Type K for concrete to concrete

Load bearing thermal insulation element for cantilever balconies. The element transfers bending moment stress and shear forces. The integrated hanging and perimeter tensile reinforcement, fitted as standard, saves the unnecessary and costly use of extra stirrups or hooped mat.



Type KS for concrete to steel

Enables the thermal insulation of steel constructions to concrete slab.



Punching Shear Reinforcement Kit

Shearfix

Ancon Shearfix is used within a slab to provide additional reinforcement around a column head or base. Shearfix rails are manufactured from strips of steel, 16mm wide. The quantity of studs and rails, their dimensions and spacings, and the layout pattern around the column is determined by calculation.



Steel-to-Concrete

Hy-Ten Shear Rail

HT Shear Kit is a simple and cost effective means of providing punching reinforcement. Stud diameters range from 8mm to 32mm to suit any slab thickness.



Cast-in Channels

30/20

Ancon 30/20 is a high performance channel and should be used in preference to 38/17. Its unique shape allows the applied load to be fed directly from the channel lips to the anchors and the more compact section size improves its fit between reinforcement. In addition, its lower material content provides cost benefits.



Specially designed T-head bolts ride up the sloping sides of the channel and securely lock behind the front lips. This channel also accepts standard 20mm wide wall ties.

Fixing to Channels

Inserted into the channel and turned through 90°. The bolt must then be tightened to the correct torque. Tapped plate washers can be used as an alternative to 'T' bolts where non-standard bolt lengths or diameters are required.



Omega 21/18

Self-anchoring channel for use with Ancon wall ties referenced SP21, SD21 or PP21. The shallow depth of 18mm allows the channel to be used where there is reduced cover to the reinforcement. Nail holes aid the fixing of the channel to timber formwork.



Support Fixings

Types of Suitable Fixings:

- Single Expansion Bolts (Concrete)
- High Performance Bolts (Concrete)
- Ancon Steel Grip (Steel Box Section)
- Resin Anchors (Concrete)

High performance bolt



Capsule anchors



Reinforcement & Formwork

Floor Decking

CombiDeck

Developed for use with the permanent metal deck shuttering of steel framed structures.

It is supplied in standard three metre lengths in a variety of heights to suit the floor thickness.

Corner assemblies and special units are available to suit particular applications.



Formwork Chemicals

Adofill

Formwork Patch Repair Compound

A rapid curing, stainable, two-part unsaturated polyester resin based wood filler designed to give superior performance and longevity. This non-sag, repair filler is ideal for larger repairs to damaged or rot affected timber and is particularly suitable for structural overhead repairs when suitable plastic shuttering is used. It is easy to model and shape upon initial setting. Specifically developed to enable repairs to be carried out within one hour.



Usage: 1m² per 2kg

Sizes: 1.4kg, 6kg (other sizes available on request)

Colours: White, Dark Oak, Black.

Adostrike

Concrete Mould Oil (BCA Category 5)

High quality mould oil for general site and precast yard use that achieves a top quality concrete finish in most situations. Release is achieved by the oil forming a physical barrier between the formwork surface and the concrete. Surfactants help to eliminate blowholes and provide a clean, uniformed and non-stained surface.



Usage: 30-40m²

Sizes: 5, 20, 25, 205 Litres

Colour: Colour Free

Adostrip

(BCA Category 2)

A high quality non-staining release mould oil for use on all types of shuttering and formwork. It incorporates active ingredients which allows forms to remain in place longer than traditional Mould Oils.

Usage: 15-30m² per litre

Sizes: 5, 25, 210 Litres

Colour: Struck Concrete



Safetard Liquid

Water Based Surface Retarder for Application to Concrete Top Face Aqueous solution of penetrating and retarding agents.

Usage: 30-40m²

Sizes: 5, 20, 25, 205 Litres

Colour: Light Brown



Safetard Gel

Water Based Surface Retarder for Application to Formwork

A gel type composition, colour tinted to assist application. Formulated to retard the set of fresh concrete that comes into contact with it. It is ideally suited to the production of exposed aggregate finishes or 'keyed' surfaces for construction joints or for subsequent application of plasters or renders.

Usage: 3-4m² per litre

Sizes: 5, 25 Litres

Colour: Transparent



Adoseal

Plastic Formwork Coating

A low viscosity, high solids, single pack moisture curing polyurethane which, being of lower vapour pressure than most similar materials, is an easier material for operatives to use. Includes wetting agents to provide maximum adhesion. Can be used with all types of timber formwork and other porous and semi-porous types of materials used for concrete forming.

Usage: 7-9m² per litre

Sizes: 1, 5, 25 Litres

Colour: Translucent



Adolease

Chemical release agent (BCA Category 2)

Release agent for general site use to achieve easy formwork release and first class concrete finish but also maintains a high degree of formwork cleanliness. It is a blend of reactive oils in a partially evaporative rapid drying hydrocarbon carrier. The carrier dries to form a positive barrier coating on the form face.

Usage: 30-40m² per litre

Sizes: 5, 20, 25, 205 Litres

Colour: Transparent Amber



Safelease

Environmentally Friendly Formwork Release Agent

Developed using the latest water soluble polymer technology to produce an environmentally friendly and highly efficient release material for concrete formwork on site. Ready to use and particularly suited to outdoor use on faced sealed plywood, steel moulds and other impervious formwork materials.

Usage: 30-40m² per litre

Sizes: 5, 20, 25, 205 Litres

Colour: White



Concrete Curing, Hardening and Sealing

Safecure Standard

Water Based, Medium Efficiency Concrete Curing Compound

Spray-on temporary membrane to retain moisture in freshly placed concrete. It is formulated to prevent evaporation of the gauging water and provides an economical and efficient method for curing concrete.

Usage: 4-6m² per litre

Sizes: 5, 20, 25, 205 Litres

Colour: Clear



Adotuf Concrete Surface Hardener and Dustproofer

Significantly improves the properties of the floor to render dustproof, oil and grease proof, case hardened, resistant to dilute acids, more durable, longer lasting and easier to clean.

Usage: 8m² per litre

Sizes: 5, 20, 25, 205 Litres

Colour: Cloudy Colour Free



Reinforcement & Formwork

Safecure Super

Water Based, High Efficiency Concrete Curing Compound

Spray-on temporary membrane to retain moisture in freshly placed concrete. It is formulated to prevent evaporation of the gauging water and provides an economical and efficient method for curing concrete.

Usage: 4-6m² per litre

Sizes: 5, 20, 25, 205 Litres

Colour: Clear



Adocure Sealer

A clear acrylic polymer resin solution primarily for application to surfaces of freshly laid concrete where it has a double function. The first to form a highly effective curing membrane that conforms to ASTM. C309, and the second is to act as an in-depth sealer for the hardened concrete, rendering its surface dustproof and extremely hard wearing. Its secondary function and benefits are also applicable when the material is applied to existing concrete surfaces.

Usage: 6m² per litre

Sizes: 5, 20, 25, 210 Litres

Colour: Transparent Amber

Safestrike

Suitable for or general site and precast yard use. It achieves a top quality concrete finish in most situations and with the majority of formwork mould surfaces – including metal, plywood, polymeric and MDO. Release is achieved by the formation of a physical barrier between the formwork surface and the concrete.

Usage: 30-40m²

Sizes: 5, 20, 25, 205, 1000 Litres

Colour: Transparent Pale Yellow

Adocure Sealer PF

Available in PF grade for Power Floated floors.

Usage: 6m² per litre

Sizes: 5, 20, 25, 210 Litres

Colour: Transparent Amber



Adocure WWT

Fugitive dye is added to Adocure WW to aid visual identification of areas of application.

Usage: 4-6m²

Sizes: 5, 20, 25, 210 Litres

Colour: Cloudy Pale Blue



Adocure WW

An aqueous silicate solution, designed to deposit a layer of firmly bonded, high cohesive strength, minute crystals within the top surface of the concrete to form an integral membrane.

This in turn, will fill all surface pores and capillaries to reduce moisture evaporation.

Usage: 5.5m² per litre

Sizes: 5, 20, 25, 210 Litres

Colour: White



Adocure Standard

Resin based curing compound of 75% efficiency. This is a solution of inert resins in evaporative solvents for use in general construction projects.

Usage: 4-6m²

Sizes: 5, 20, 25, 210 Litres

Colour: Transparent Amber



Adocure Super

Resin based curing compound of 90% efficiency. Complies with Clause 1027 of the Department of Transport's specification for Highway Works, similar to Adocure Standard but with a higher curing efficiency. WBS listed for drinking water projects.

Usage: 4-6m²

Sizes: 5, 20, 25, 210 Litres

Colour: Transparent Amber



Adocure Super AL

Aluminised for use in strong sunlight conditions and where DTp stipulate aluminised for highways, bridges, runways, etc.

Usage: 4-6m²

Sizes: 5, 20, 25, 210 Litres

Colour: Silver/Grey



Brick and Concrete Cleaning Material

Brick Cleaner

Removes heavy deposits of rust, scale, cement, concrete and mineral deposits from most hard surfaces. Contains Hydrochloric acid and can be used neat up to 1:20 dilution depending on application.

Sizes: 5, 25 Litres

Janitol Plus

A non-caustic, high performance degreaser for the effective removal of heavy deposits of oils, greases and other stubborn stains. An effective alternative to hazardous solvent and caustic cleaners. Dilution rate 1:10 to 1:40 depending on application.

Sizes: 5, 25 Litres

Jizer

Water rinsable degreaser. Solvent action removes oil, grease, tar, bitumen and waxes when used neat.

Sizes: 5, 25 Litres

CANNON STEELS

"The name in steel for over 50 years"

0208 805 4070

enquiries@cannonsteelsltd.co.uk

www.cannonsteelsltd.co.uk

7 Walcot Road, Brimsdown, Enfield EN3 7NF