



## Refurbishment? Redevelopment?

*For all the Steel - Call Cannon Steels*

*Cannon Steels are an established Steel Stockholding and Steel Fabrication Company and can offer the complete Steel Supply service to the Building and Construction trades, local builders and the D.I.Y. Trade. We operate from our large stockyard and fabrication works in Enfield, North London. Close to the M25 we offer speedy deliveries throughout London and the surrounding areas on our own fleet of lorries.*

*For competitive prices, prompt deliveries and the complete service to the Construction and Building industries - plus our Trade Counter for urgent Collections, Local builders and D.I.Y. call us now with all your steel requirements.*

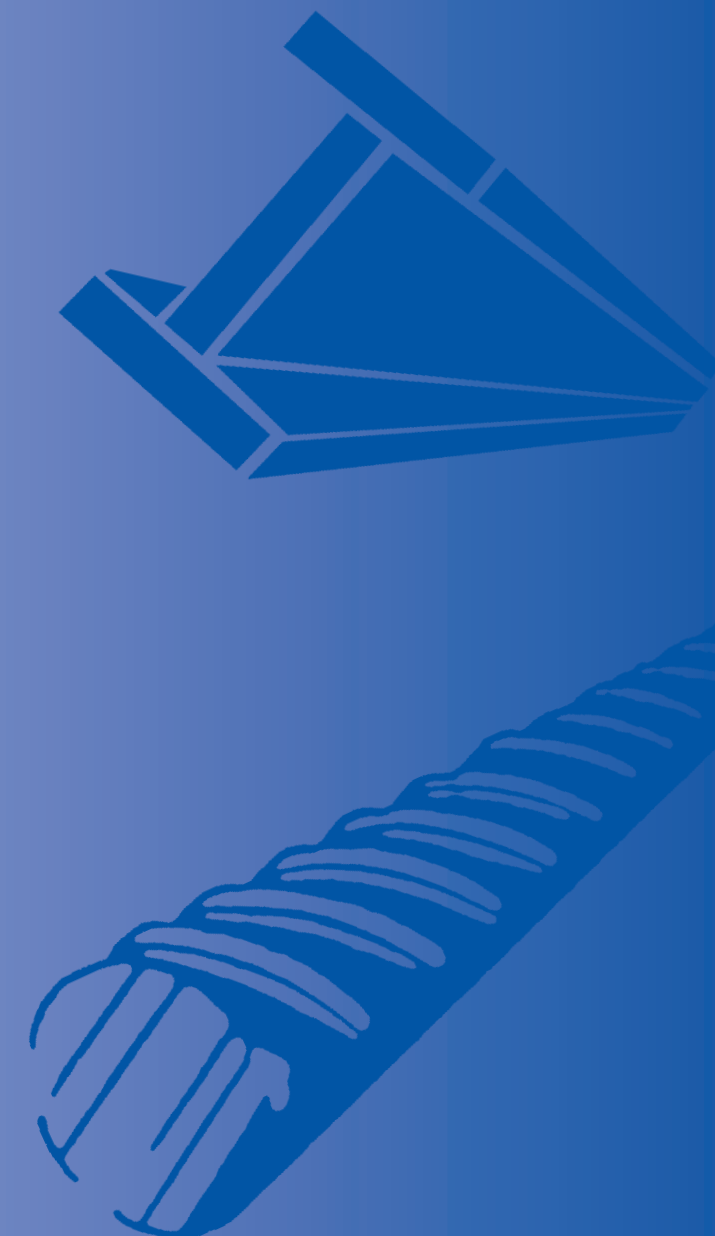
- STEEL FROM STOCK
- CUT TO LENGTH
- FABRICATION TO DRAWINGS
- WELDING - DRILLING
- RSJ'S U-BEAMS, COLUMNS, PLATES
- CHANNELS, ANGLES, TUBES, BARS
- DESIGN - SITE SURVEY
- ERECTION ON SITE
- REINFORCING STEEL

### *Cannon Steels Ltd*

*London Works:  
Tel: 020-8805 4070/020-8805 6987  
[www.cannonsteelsltd.co.uk](http://www.cannonsteelsltd.co.uk)  
[email@cannonsteelsltd.co.uk](mailto:email@cannonsteelsltd.co.uk)*

# CANNON STEELS

*The Complete Steel Service for over 50 years'*



7 Walcot Road, Brimsdown, Enfield  
Middlesex. EN3 7NF

Telephone:

**020-8805 4070**

**020-8805 6987**

[www.cannonsteelsltd.co.uk](http://www.cannonsteelsltd.co.uk)  
[email@cannonsteelsltd.co.uk](mailto:email@cannonsteelsltd.co.uk)



**Visit Our  
Website For  
Full Details**

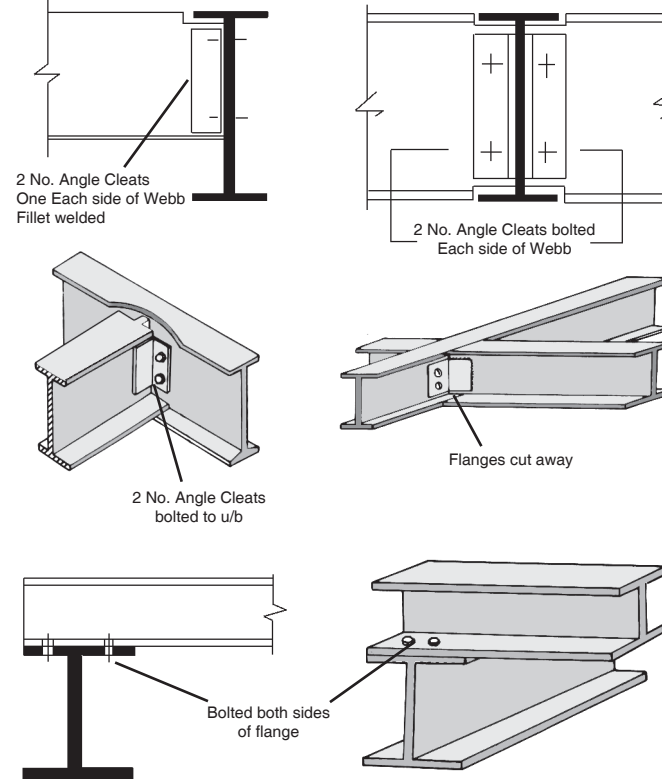
**CUT TO SIZE OR  
FULLY FABRICATED**

# CANNON STEELS

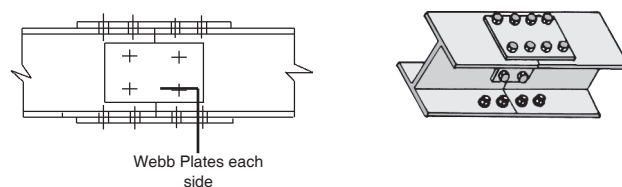
**CUT & BENT BAR  
24 HOUR EXPRESS SERVICE**

## Typical Fabrication Details

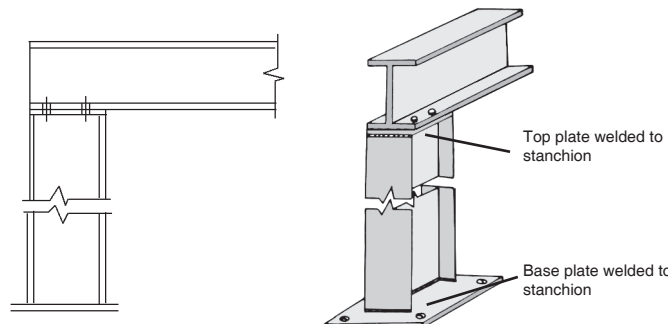
### A. Beam to Beam Connections



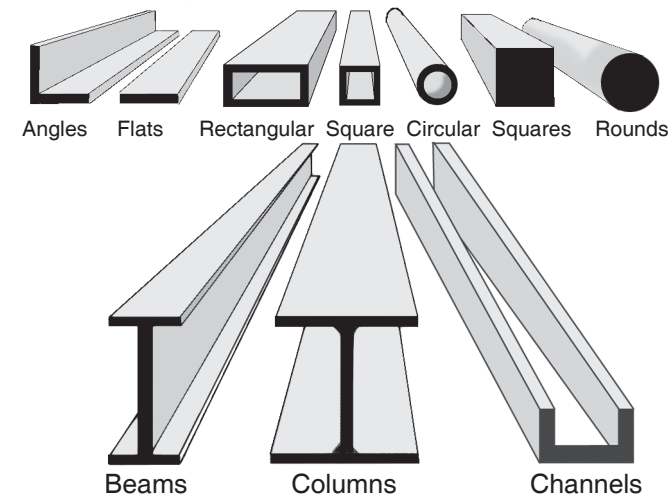
### B. Splice Connections



### C. Beam to Stanchion Connections



## All Steels Supplied



## Reinforcing Mesh BS 4483 : 2005

Standard sheet size 4.8 x 2.4 Meters. Area 11.52 M<sup>2</sup>

BS REF.	Mesh sizes nominal pitch of wires	wire sizes main cross mm	main cross mm	Cross Sect. area per meter width mm <sup>2</sup>	Nominal Weight per sheet M <sup>2</sup>	Weight per sheet kg	Weight per sheet tonne
---------	-----------------------------------	--------------------------	---------------	--	---	---------------------	------------------------

### SQUARE MESH FABRIC

A393	200	200	10	10	393	393	6.16	14.1	70.96
A252	200	200	8	8	252	252	3.95	22.0	45.50
A193	200	200	7	7	193	193	3.02	28.7	34.79
A142	200	200	6	6	142	142	2.22	39.1	25.57

### STRUCTURAL MESH FABRIC

B1131	100	200	12	8	1131	252	10.90	8.0	125.57
B785	100	200	10	8	785	252	8.14	10.7	93.57
B503	100	200	8	8	503	252	5.93	14.6	68.31
B385	100	200	7	7	385	193	4.53	19.2	52.19
B283	100	200	6	7	283	193	3.73	23.3	42.97
B196	100	200	5	7	196	193	3.05	28.5	35.14

### LONG MESH FABRIC

C785	100	400	10	6	785	71	6.72	12.9	77.41
C636	100	400	9	6	636	71	5.55	15.6	63.94
C503	100	400	8	6	503	71	4.51	19.2	51.96
C385	100	400	7	6	385	71	3.58	24.2	41.24
C283	100	400	6	6	283	71	2.78	31.2	32.03

### WRAPPING FABRIC

D49	100	100	2.5	2.5	49	49	0.77	112.7	8.87
-----	-----	-----	-----	-----	----	----	------	-------	------

## Bar Bending Shapes • BS 8666 : 2005

<b>SHAPE CODE 00</b>  LENGTH = A	<b>SHAPE CODE 01</b>  LENGTH = A Stock Lengths (6m + 12m)	<b>SHAPE CODE 11</b>  LENGTH = A + (B) - 0.5r - d	<b>SHAPE CODE 12</b>  LENGTH = A + (B) - 0.43R - 1.2d
<b>SHAPE CODE 13</b>  LENGTH = A + 0.57B + (C) - 1.6d	<b>SHAPE CODE 14</b>  LENGTH = A + (C) - 4d	<b>SHAPE CODE 15</b>  LENGTH = A + C	<b>SHAPE CODE 21</b>  LENGTH = A + B + (C) - r - 2d
<b>SHAPE CODE 22</b>  LENGTH = A + B + C + (D) - 1.5r - 3d	<b>SHAPE CODE 23</b>  LENGTH = A + B + (C) - r - 2d	<b>SHAPE CODE 24</b>  LENGTH = A + B + (C)	<b>SHAPE CODE 25</b>  LENGTH = A + B + (E)
<b>SHAPE CODE 26</b>  LENGTH = A + B + (C)	<b>SHAPE CODE 27</b>  LENGTH = A + B + (C) - 0.5r - d	<b>SHAPE CODE 28</b>  LENGTH = A + B + (C) - 0.5r - d	<b>SHAPE CODE 29</b>  LENGTH = A + B + (C) - r - 2d
<b>SHAPE CODE 31</b>  LENGTH = A + B + C + (D) - 1.5r - 3d	<b>SHAPE CODE 32</b>  LENGTH = A + B + C + (D) - 1.5r - 3d	<b>SHAPE CODE 33</b>  LENGTH = 2A + 1.7B + 2C - 4d	<b>SHAPE CODE 34</b>  LENGTH = A + B + C + (E) - 0.5r - d
<b>SHAPE CODE 35</b>  LENGTH = A + B + C + (E) - 0.5r - d	<b>SHAPE CODE 36</b>  LENGTH = A + B + C + (D) - r - 2d	<b>SHAPE CODE 41</b>  LENGTH = A + B + C + D + (E) - 2r - 4d	<b>SHAPE CODE 44</b>  LENGTH = A + B + C + D + (E) - 2r - 4d
<b>SHAPE CODE 46</b>  LENGTH = A + 2B + C + (E)	<b>SHAPE CODE 47</b>  LENGTH = 2A + B + 2C - 1.5r + 3d	<b>SHAPE CODE 51</b>  LENGTH = 2(A + B + C) - 2.5r - 5d	<b>SHAPE CODE 56</b>  LENGTH = A + B + C + (D) + 2(E) - 2.5r - 5d
<b>SHAPE CODE 63</b>  LENGTH = 2A + 3B + 2(C) - 3r - 6d	<b>SHAPE CODE 64</b>  LENGTH = A + B + C + 2D + E + (F) - 3r - 6d	<b>SHAPE CODE 67</b>  LENGTH = A	<b>SHAPE CODE 75</b>  LENGTH = π(A - d) + B
<b>SHAPE CODE 77</b>  LENGTH = C π(A - d) C = No. of turns	<b>SHAPE CODE 98</b>  LENGTH = A + 2B + C + (D) - 2r - 4d	<b>SHAPE CODE 99</b>  All other shapes where standard shapes cannot be used	

## Bar Dimensions / Weights

Bar Dimensions/Weights mm nominal size	Cross Sectional mm	Mass Per Meter Run (MM <sup>2</sup> )	Meter Per Tonne (kg)
6*	28.3	0.222	4504
8	50.3	0.395	2531
10	78.5	0.616	1623
12	113.1	0.888	1126
16	201.1	1.579	633
20	314.2	2.466	405
25	490.9	3.854	259
32	804.2	6.313	158
40	1256.6	9.864	101

- **COMPLETE FABRICATION**
- **SERVICE & SITE ERECTION**
- **RANGE OF ACCESSORIES**
- **STUDDING, BOLTS & FIXINGS**



**HEAD OFFICE AND MAIN WORKS**  
 7 WALCOT ROAD • MILLMARSH LANE • BRIMSDOWN • ENFIELD • MIDDLESEX EN3 7NF  
**Tel: 020-8805 6987/4070**

